

FIXTURLASER SMC

AUTOMATIC DIAGNOSIS OF
ROTATING EQUIPMENT



acoem

CREATING ENVIRONMENTS OF POSSIBILITY

Fixturlaser Smart Machine Checker (SMC)

The Fixturlaser SMC machinery analyzer delivers automatic diagnosis of machine faults, with no need for an internet connection.

The innovative Fixturlaser SMC is a handheld machinery diagnostic tool that empowers mechanics and maintenance technicians to check the health of rotating machines, as needed, in just minutes. It requires no special training or certification and generates straightforward, easy-to-understand machine diagnostic reports which specify any faults along with severity level and confidence level.



Accurex™, a breakthrough in machinery diagnosis

Accurex is the patent-pending automatic diagnostic software built into the Fixturlaser Smart Machine Checker. Accurex detects more faults on more machines more accurately and reliably than any previous diagnostic tool:

- Unbalance
- Misalignment
- Bearing Defects - Wear, Lubrication
- Shock Modulation (Mounting, Clearance, Friction)
- Structural Resonance
- Gear Wear
- Shock / Modulation (Gear)
- PumpCavitation

The intelligence built into Accurex is based on a Bayesian network developed by the engineers at ACOEM, the parent company of Fixturlaser and VibrAlign. Accurex is the product of more than 30 years of experience in vibration analysis innovation.

Three axis wireless sensor

The Fixturlaser Smart Machine Checker features a wireless triaxial sensor that takes readings in the vertical, horizontal and axial directions simultaneously, making the measurement process fast, foolproof and easy.



Built-In Accessories

- **Stroboscope:** Pinpoint the machine's RPM, which is crucial for ensuring an accurate diagnosis.
- **Pyrometer:** Take the temperature of the machine to verify the diagnosis.
- **Camera:** Create a record for easy machine identification, sensor positioning and for report illustration.



Fast, accurate machinery diagnostics in 3 simple steps.

Step 1. Select the machine you want to diagnose

Step 2. Use the triaxial sensor to take readings at each of the automatically designated points

Step 3. View the diagnostic report to learn the machine's condition as well as any action steps you need to take



Once you've completed the diagnosis, use the SMC's reporting capability to create a customizable MS Word report, which can also be saved as a PDF file.



Good: No action required



Fair: Monitor the evolution



Critical: Schedule corrective action



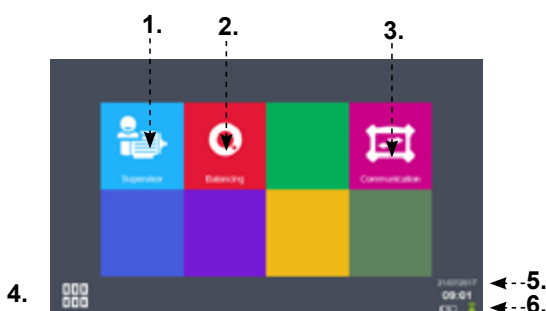
Optional Accessory Kit: Fixturlaser SMC Balancing

The balancing accessory kit enables the SMC to be used to perform precision 1-channel or 2-channel balancing. The program guides the user throughout the balancing process and automates all calculations. The process starts with measuring the unbalance, which includes defining the machine, configuring the speed counter and selecting test weights. Following measurement, the SMC balancing routine will specify the necessary correction weights.

The Fixturlaser SMC replaces the ONEPROD HAWK

Our customers spoke and we listened. Accurex machinery diagnostics was originally introduced in the HAWK, a tool that required an internet connection for machine building and reporting. Customers told us they prefer a tool with all the functionality available offline, in the box – hence the SMC. Additionally, this tool now comes under the umbrella of Fixturlaser; a brand well-established for delivering easy-to-use precision instruments to machinery maintenance personnel.

Main Menu Screen



1. Start auto diagnostic
 2. Start balancing
 3. Connect to computer
 4. Access to shortcuts (strobelight, pyrometer, camera, screenshots...) and preferences (license, language, type of sensor...)
 5. SMC Battery status
 6. Wireless sensor connection status.
- Note: if no icon appears, you must switch the sensor type from wired to wireless in the settings of the instrument

What`s included: Fixturlaser SMC

1 pcs Fixturlaser SMC DU, 1 pcs Fixturlaser SMC sensor, 1 pcs USB Cable for the wireless sensor (power supply,firmware update), 6 pcs adapter, 1 pcs Fixturlaser SMC power supply, 1 pcs Wireless sensor power supply, 1 pcs Universal tool,



FIXTURLASER SMC

Display Unit

Dimensions:	200 x 265 x 650 mm 7.87 x 10.4 x 2.56 inches
Weight:	1.2 kg / 2.65 lbs. including battery and rubber protection
Operating Temperature:	-10 ° to 55 ° C / 14° F to 131° F
Humidity:	95% no condensation
Environmental Protection:	IP65
Graphic color touchscreen Resolution:	800 x 480 pixels
Dimension:	7" diagonal (15 x 9 cm /6 x 3.5inches)
Battery Life:	10 hours under intense use, High density Li-ion type
Built-in Pyrometer with Laser-Sighting	
Built-in Stroboscope	
Range:	30 to 15,000 RPM Accurate to 0.1 RPM
Built-In Camera	

What`s included: Fixturlaser SMC Balancer

Laser tachometer with cable for connection on channel C, supplied with a 5m extension cable.

USB cable for connecting the Fixturlaser SMC to a computer (reports) Magnet holder

2 ASH accelerometers, 2 straight cables for ASH, 2 high-power magnets for ASH



About acoem

Creating environments of possibility

In today's fast-moving world, the environment is increasingly impacted. The Acoem Group is committed to sustainable development and help companies and public authorities limit their environmental impact by offering products and services that:

- Prevent and control air, noise and vibration pollution;
- Increase the productivity and reliability of industrial machinery;
- Contribute to the development of effective, robust & noiseless products;
- Protect soldiers, sites and vehicles in military theaters of operation.

The Acoem Group is based in Limonest, France, and has 17 subsidiaries and offices around the world. The Group generates an annual turnover over €100 million and currently employs 750+ people globally.

acoem.com

